

PGUA/UAM

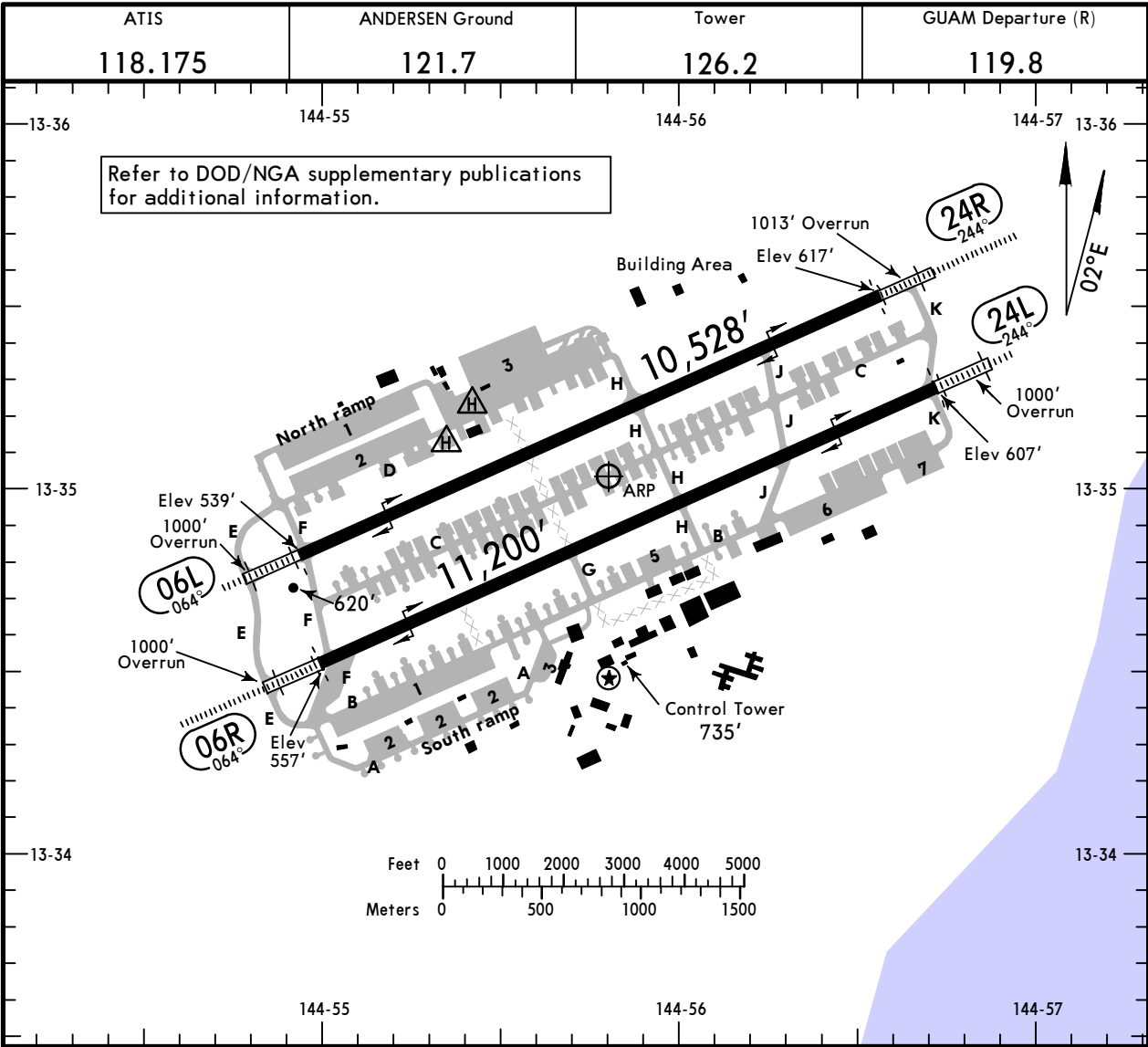
Apt Elev **617'**
N13 35.0 E144 55.8

JEPPESSEN

3 SEP 21 **(31-1)**

ANDERSEN AFB

YIGO, GUAM



ADDITIONAL RUNWAY INFORMATION							
RWY						USABLE LENGTHS	
						LANDING BEYOND	TAKE-OFF
06R	24L	HIRL	ALSF-I	REIL	PAPI-L (angle 3.0°)	RVR	
		HIRL	SALS	REIL	PAPI-L (angle 3.0°)	RVR	WIDTH
06L	24R	HIRL	SALS	REIL	PAPI-L (angle 3.0°)	RVR	200'
		HIRL	ALSF-I	REIL	PAPI-L (angle 3.0°)	RVR	

--	--	--	--	--	--	--	--

TAKE-OFF & OBSTACLE DEPARTURE PROCEDURE			
All Rwys			
Adequate Vis Ref		STD	
1 & 2 Eng	1/4	1	
3 & 4 Eng		1/2	

TAKE-OFF OBSTACLES: Rwy 06L, Terrain 0' from DER 222' right of centerline, 618' MSL, Terrain 3' from DER 501' left of centerline, 620' MSL, Terrain 41'	from DER 500' left of centerline, 619' MSL, Terrain 46' from DER 512' left of centerline, 619' MSL.
---	---

OBSTACLE DP
Rwy 06L, climb on heading 064° to 1027', then proceed on course.

DME Z Rwy 06L

© JEPPESEN, 2009, 2021. ALL RIGHTS RESERVED.

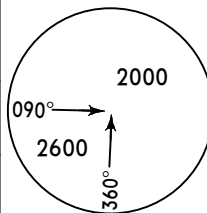
PGUA/UAM
YIGO, GUAM

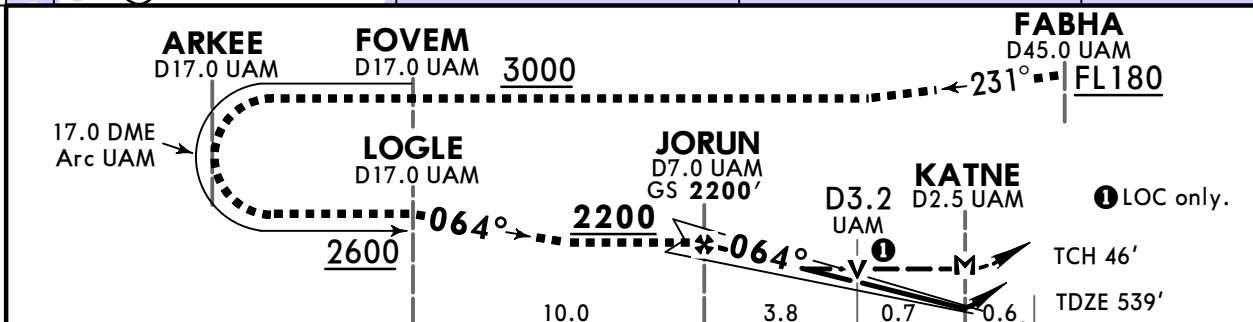
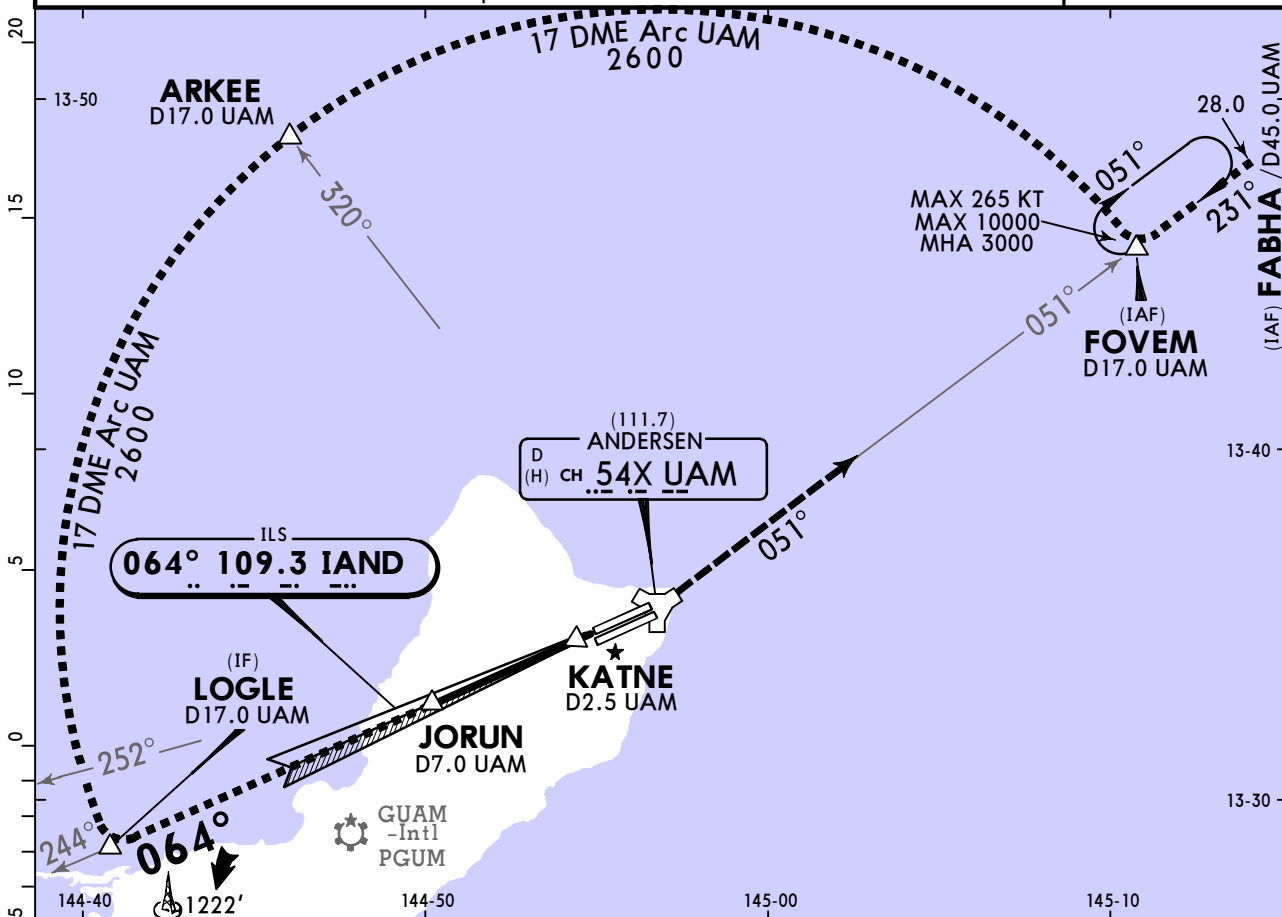
JEPPesen
3 SEP 21 **31-1-0**

TACAN Azimuth
Required

ANDERSEN AFB
HI-ILS Y or LOC DME Y Rwy 06L

BRIEFING STRIP™

ATIS 118.175 254.325		GUAM Approach (R) 119.8 269.0		ANDERSEN Tower 126.2 233.7		Ground 121.7 275.8	
LOC IAND 109.3	Final Apch Crs 064°	JORUN 2200' (1661')	ILS DA(H) 739' (200')	Apt Elev 617' TDZE 539'			
MISSED APCH: Climb to 3000', intercept UAM TACAN R-051 to FOVEM and hold.							
Alt Set: INCHES		Trans level: FL 180		Trans alt: 18000'			
1. ATC radar monitoring required. 2. CAUTION: Environmentally sensitive area, flights along Andersen cliffline restricted to 1000' AGL or above. 3. EMERG SAFE ALT 100 NM 2900'. 4. VGSI and ILS glidepath not coincident (VGSI angle 3.00°/TCH 59'). 5. All touchdown zones have a 1.0% down slope.						MSA UAM TACAN	



Gnd speed-Kts	70	90	100	120	140	160	SALS REIL PAPI	3000'	UAM CH 54X (111.7) R-051	FOVEM
GS	3.00°	372	478	531	637	743				
MAP at KATNE										

Military		STRAIGHT-IN LANDING		CIRCLE-TO-LAND	
ILS		LOC (GS out)		Not Authorized Northwest of Rwy 06L-24R	
DA(H) 739' (200')		MDA(H) 1020' (481')		Max Kts	
ALS out		ALS out		MDA(H)	
A		500'- R40 or V3/4	500'- R55 or V1	90	1060' (443') 500'-V1
B				120	1080' (463') 500'-V1
C	200'- R40 or V3/4			140	1240' (623') 700'-V1 3/4
D		500'- R60 or V1 1/8	500'- V1 3/8	165	1240' (623') 700'-V2
E				200	1240' (623') 700'-V2 1/4

CHANGES: Transition altitudes.

© JEPPesen, 2020, 2021. ALL RIGHTS RESERVED.

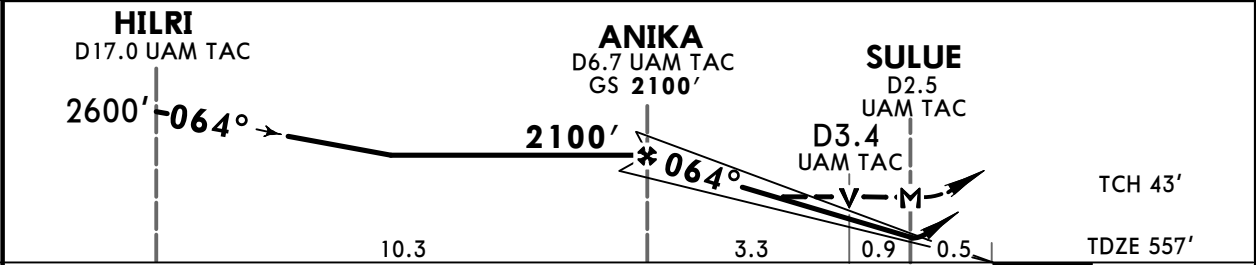
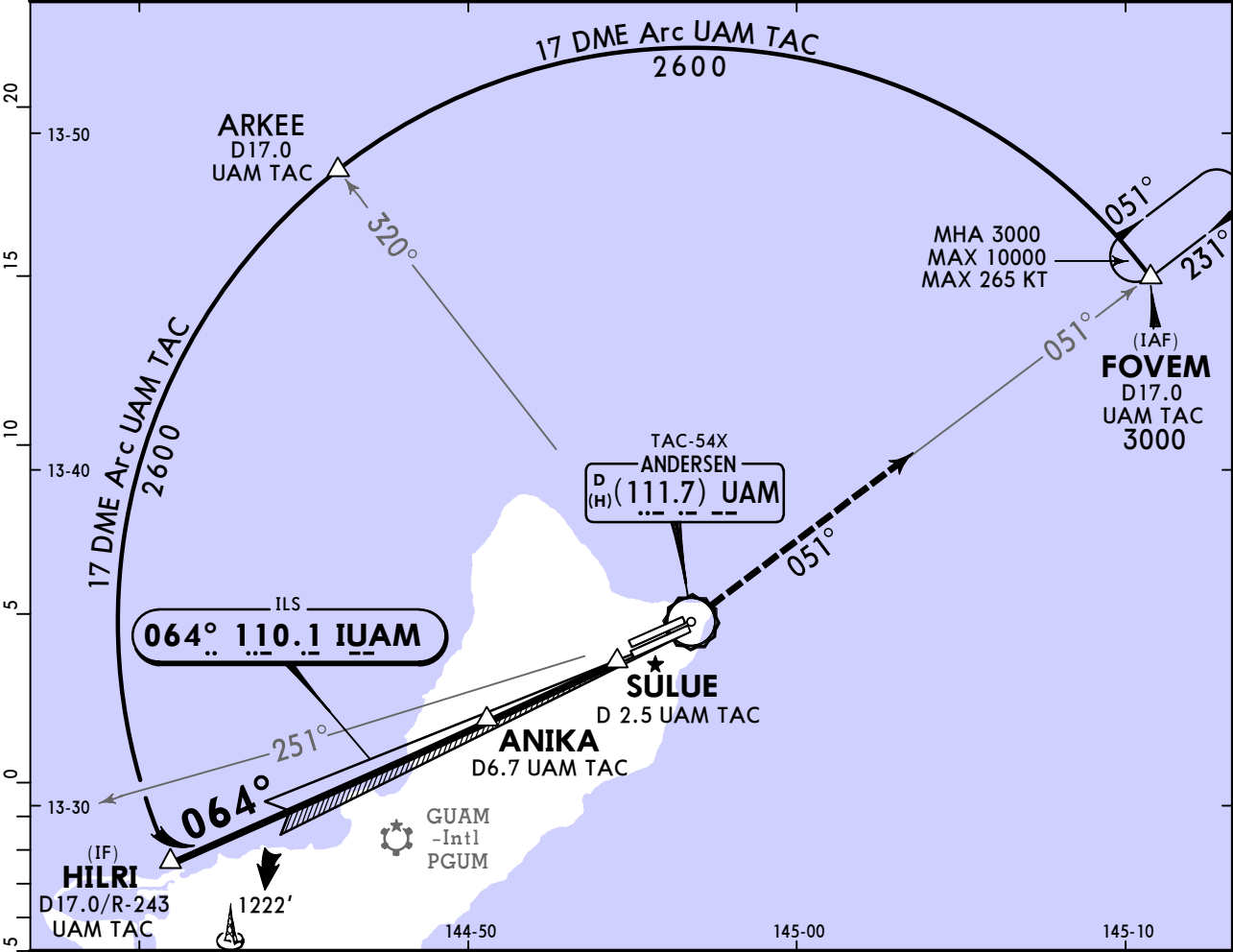
PGUA/UAM
YIGO, GUAM

JEPPESSEN
3 SEP 21

TACAN Azimuth
Required

ANDERSEN AFB
ILS Z or LOC DME Z Rwy 06R

ATIS 118.175		GUAM Approach (R) 119.8		ANDERSEN Tower 126.2		Ground 121.7	
LOC IUAM 110.1	Final Apch Crs 064°	ANIKIA 2100'(1543')		ILS DA(H) 757'(200')	Apt Elev 617' TDZE 557'		 MSA UAM TAC
MISSED APCH: Climb to 3000', intercept UAM R-051 to FOVEM and hold.							
Alt Set: INCHES							



Gnd speed-Kts		70	90	100	120	140	160		<div>ALSFI-I</div> <div>REIL PAPI</div> <div></div>	3000'	UAM TAC-54X (111.7) R-051	FOVEM		
GS 3.00°		372	478	531	637	743	849							
MAP at SULUE														
<div>Military</div> <div>STRAIGHT-IN LANDING RWY06R</div> <div>ILSLOC (GS out)</div> <div>DA(H) 757' (200')MDA(H) 1040' (483')</div> <div>ALS outALS out</div> <div>A</div> <div>B</div> <div>C</div> <div>D</div> <div>RVR 24 or 1/2</div> <div>RVR 40 or 3/4</div> <div>RVR 24 or 1/2</div> <div>RVR 55 or 1</div> <div>RVR 50 or 1</div> <div>1 3/8</div>												<div>Not Authorized Northwest of Rwy 06L-24R</div> <div>Max Kts</div> <div>90</div> <div>120</div> <div>140</div> <div>165</div>	CIRCLE-TO-LAND	
										MDA(H)				
										1060' (443') - 1				
										1080' (463') - 1				
										1240' (623') - 1 3/4				
										1240' (623') - 2				

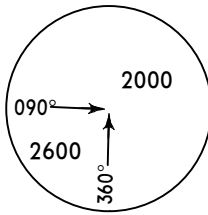
CHANGES: Transition altitudes.

PGUA/UAM
YIGO, GUAM

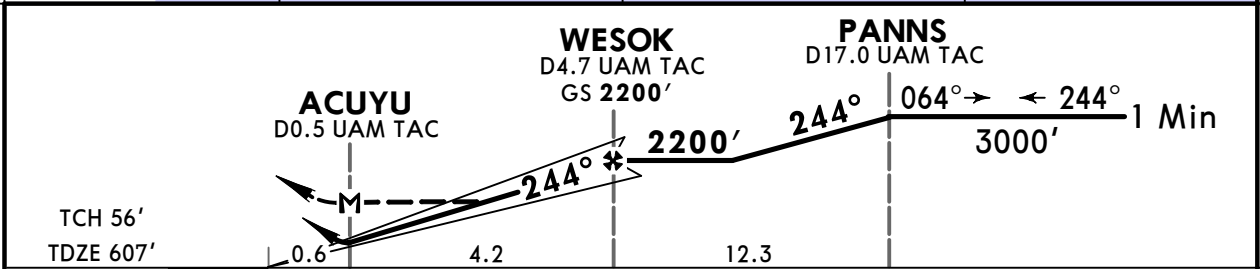
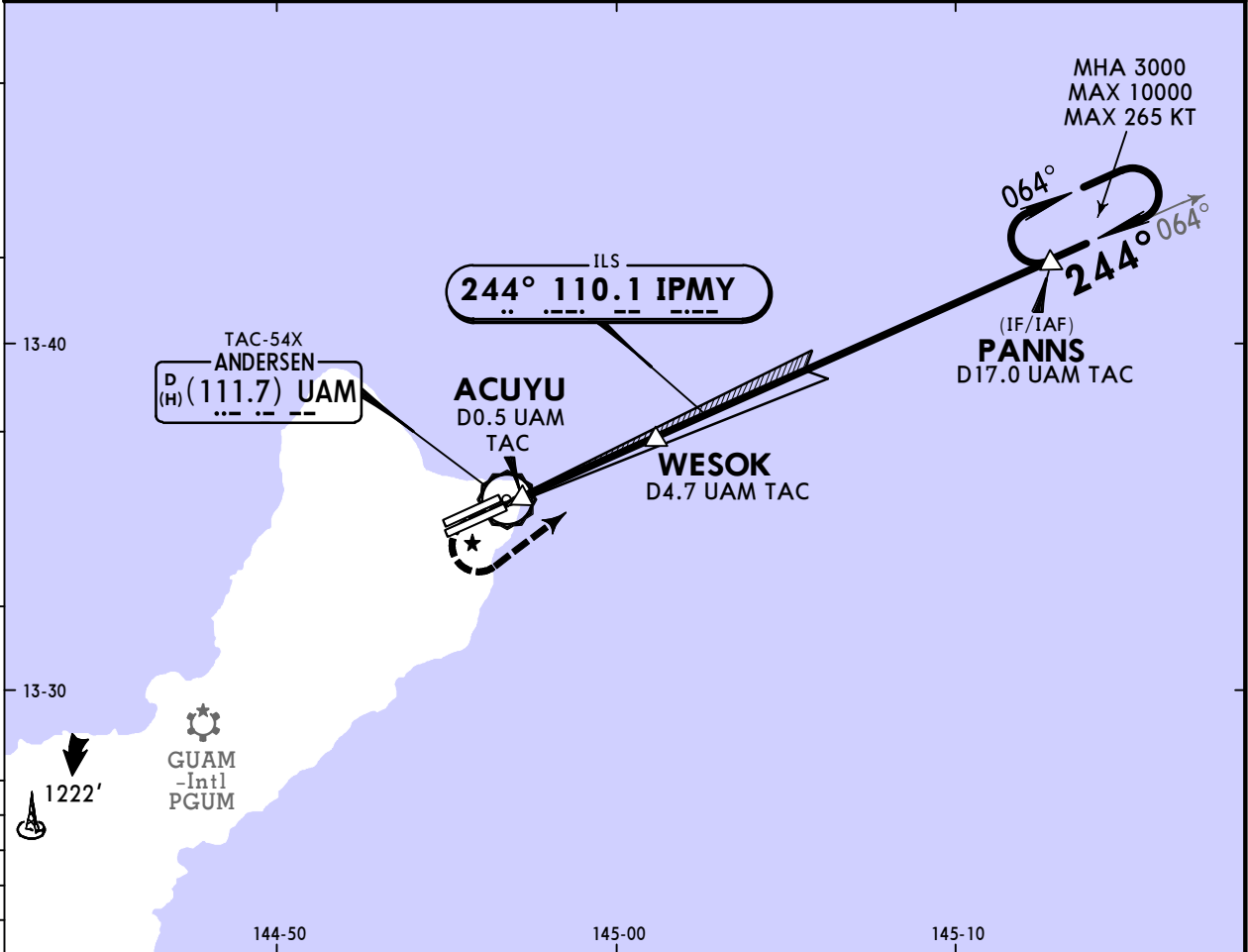
JEPPESSEN
3 SEP 21

TACAN Azimuth
Required

ANDERSEN AFB
ILS Z or LOC DME Z Rwy 24L

ATIS 118.175	GUAM Approach (R) 119.8	ANDERSEN Tower 126.2	Ground 121.7
LOC IPMY 110.1	Final Apch Crs 244°	WESOK 2200' (1593')	ILS DA(H) 900' (293')
Apt Elev 617' TDZE 607'			
MISSED APCH: Climb to 1200', then climbing LEFT turn to 3000' to intercept UAM R-064 direct PANNS and hold.			
Alt Set: INCHES		Trans level: FL 180	Trans alt: 18000'
1. CAUTION: GS unusable below 900' MSL/300' AGL due to runway supervisory unit. 2. CAUTION: Environmentally sensitive area, flights along Andersen cliffline restricted to 1000' AGL or above. 3. EMERG SAFE ALT 100 NM 2900'. 4. VGSI and ILS glidepath not coincident (VGSI angle 3.00°/TCH 43'). 5. All touchdown zones have a 1.0% down slope. 6. Disregard all glide slope indications outside 8 NM, beyond 5° either side of centerline.			
			

20
15
13-40
10
5
13-30
0
5



Gnd speed-Kts	70	90	100	120	140	160	SALS	1200'	3000'	UAM TAC-54X (111.7) R-064	PANNS
GS	3.00°	372	478	531	637	743	849	REIL	LT		
MAP at ACUYU											

Military				STRAIGHT-IN LANDING RWY24L				CIRCLE-TO-LAND			
ILS		LOC (GS out)		DA(H) 900' (293')		MDA(H) 940' (333')		Max Kts		MDA(H)	
ALS out		ALS out		ALS out		ALS out		90		1060' (443') - 1	
RVR 40 or 3/4		RVR 45 or 7/8		RVR 40 or 3/4		RVR 55 or 1		120		1080' (463') - 1	
RVR 40 or 3/4		RVR 45 or 7/8		RVR 45 or 7/8		RVR 50 or 1		140		1240' (623') - 1 3/4	
RVR 40 or 3/4		RVR 45 or 7/8		RVR 45 or 7/8		RVR 50 or 1		165		1240' (623') - 2	

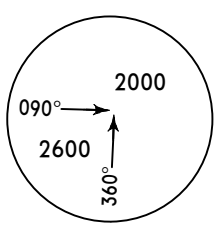
CHANGES: None.

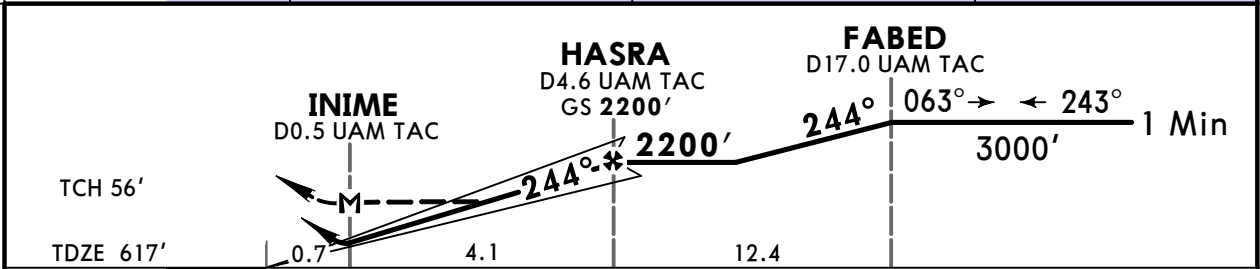
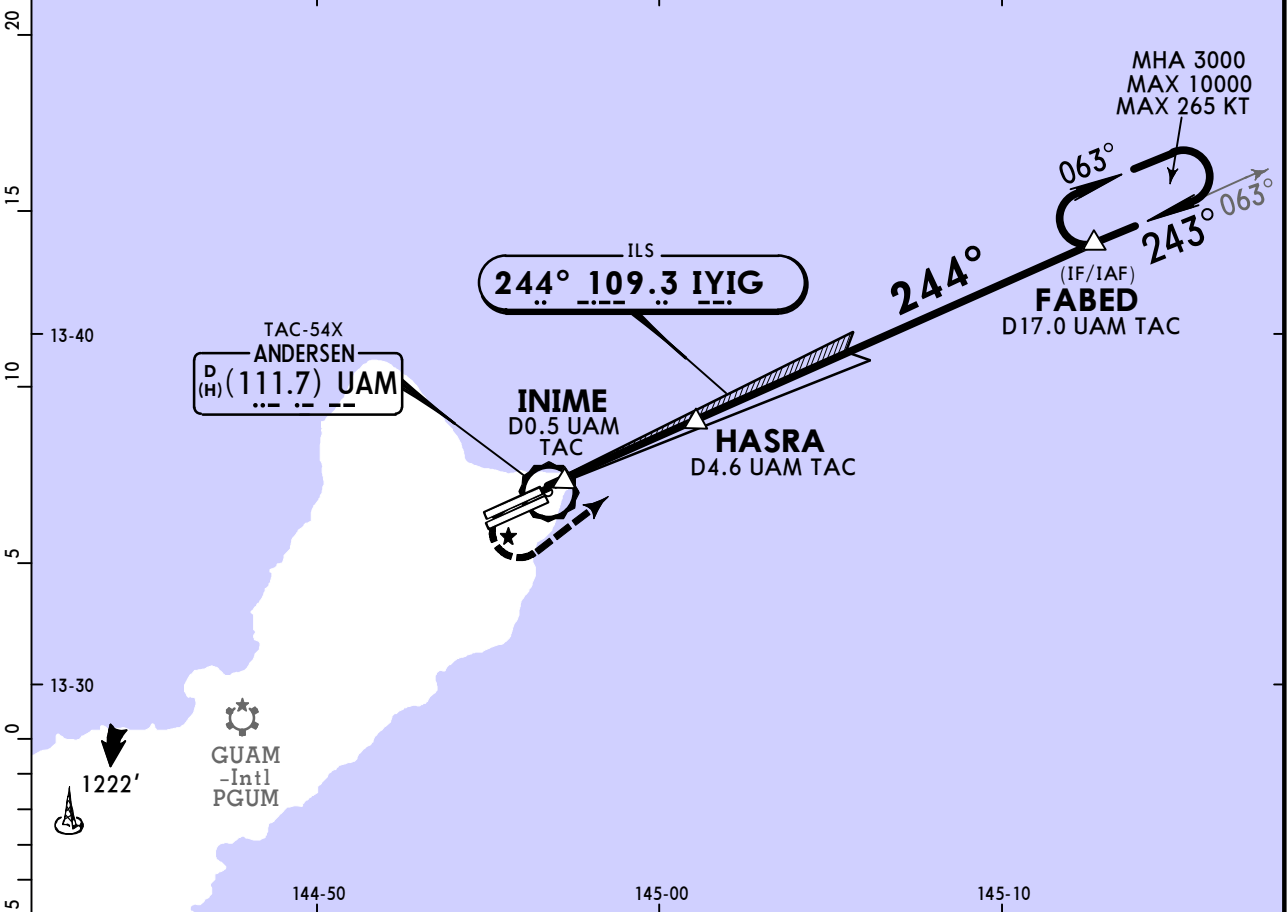
© JEPPESSEN, 2009, 2021. ALL RIGHTS RESERVED.

PGUA/UAM
YIGO, GUAM

JEPPESSEN TACAN Azimuth Required
6 AUG 21
Eff 12 Aug 31-4 ILS Z or LOC DME Z Rwy 24R

ANDERSEN AFB

ATIS 118.175		GUAM Approach (R) 119.8		ANDERSEN Tower 126.2		Ground 121.7	
LOC IYIG 109.3	Final Apch Crs 244°	HASRA 2200'(1583')	ILS DA(H) 817'(200')	Apt Elev 617' TDZE 617'		<div> MSA UAM TAC</div>	
MISSED APCH: Climb to 1100', then climbing LEFT turn to 3000' to intercept UAM R-063 direct FABED and hold.							
Alt Set: INCHES		Trans level: FL 180		Trans alt: 18000'			
1. CAUTION: Environmentally sensitive area, flights along Andersen cliffline restricted to 1000' AGL or above. 2. EMERG SAFE ALT 100 NM 2900'. 3. Disregard all glide slope indications outside 8 NM, beyond 5° either side of centerline. 4. All touchdown zones have a 1.0% down slope.							



Gnd speed-Kts	70	90	100	120	140	160	ALS F-I	1100'	3000'	UAM TAC-54X (111.7) R-063	FABED
GS	3.00°	372	478	531	637	743	REIL PAPI	↑	LT		
MAP at INIME											

Military STRAIGHT-IN LANDING RWY 24R				CIRCLE-TO-LAND			
ILS DA(H) 817' (200')		LOC (GS out) MDA(H) 940' (323')		Not Authorized Northwest of Rwy 06L-24R			
ALS out		ALS out		Max Kts	MDA(H)		
A B C D	RVR 24 or 1/2	RVR 40 or 3/4	RVR 24 or 1/2	RVR 55 or 1	90	1060' (443') - 1	
			RVR 26 or 1/2	RVR 50 or 1	120	1080' (463') - 1	
					140	1240' (623') - 1 3/4	
					165	1240' (623') - 2	

CHANGES: Procedure ident.

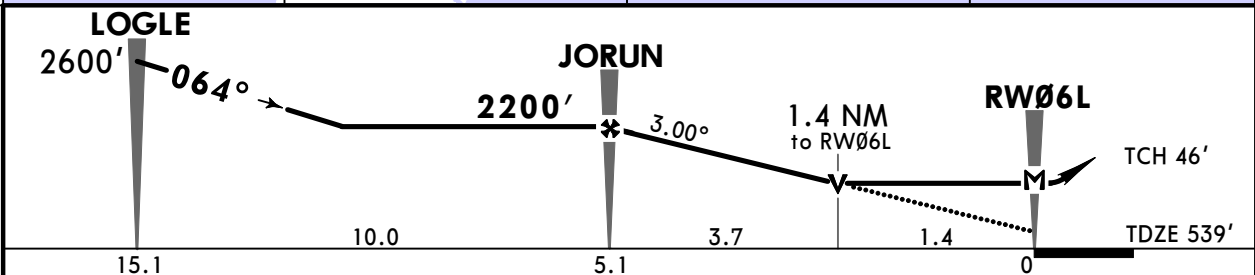
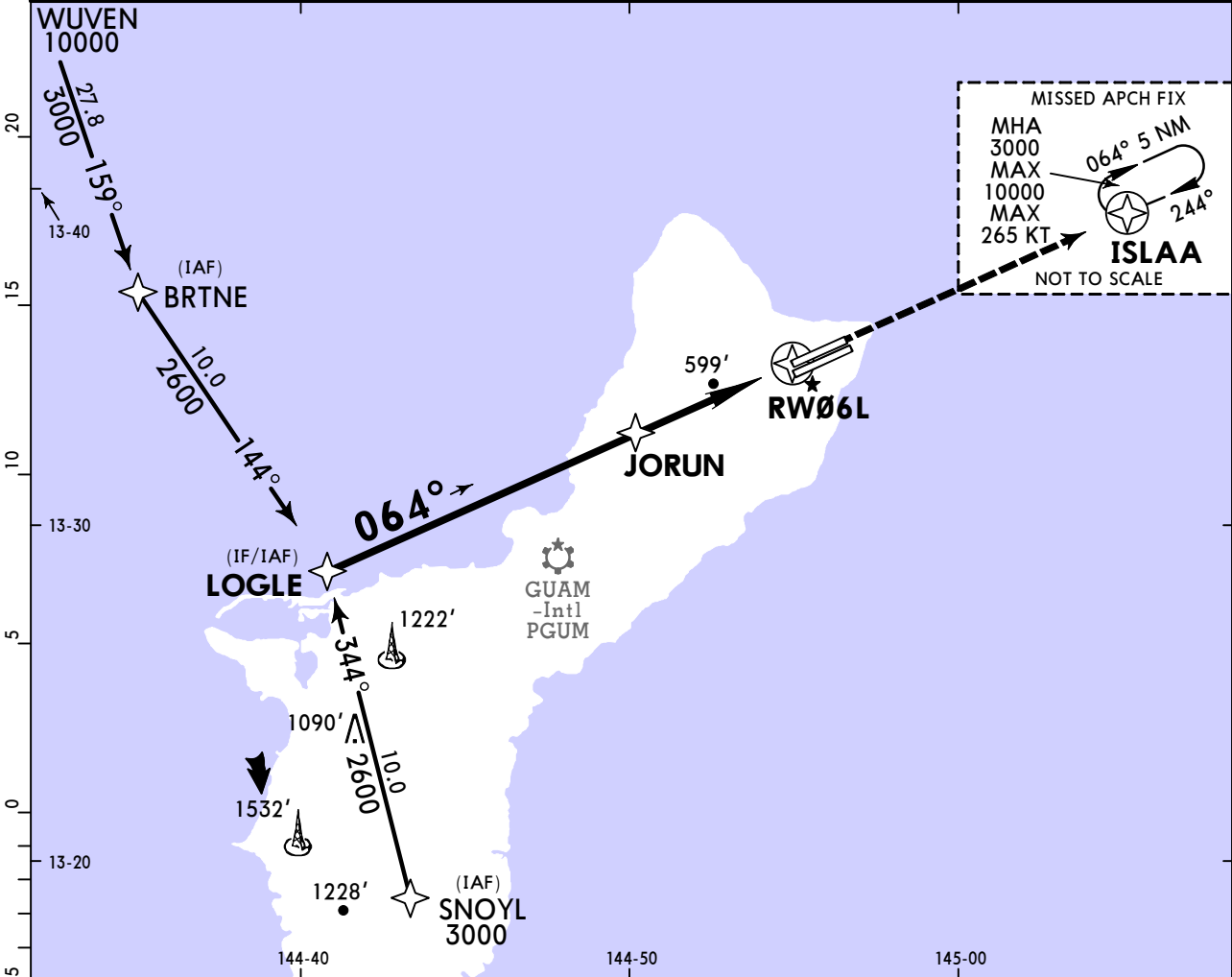
© JEPPESSEN, 2009, 2021. ALL RIGHTS RESERVED.

PGUA/UAM
YIGO, GUAM

JEPPesen
11 JUN 21
Eff 17 Jun 32-1

ANDERSEN AFB
RNAV (GPS) Rwy 06L

ATIS 118.175		GUAM Approach (R) 119.8		ANDERSEN Tower 126.2		Ground 121.7		
RNAV	Final Apch Crs 064°	JORUN 2200'(1661')	LNAV MDA(H) 1040'(501')	Apt Elev 617' TDZE 539'		<div>2600</div> <div>MSA RW06L</div>		
MISSED APCH: Climb to 3000' direct ISLAA and hold.								
RNP Apch	Alt Set: INCHES		Trans level: FL 180		Trans alt: 18000'			
1.CAUTION: Environmentally sensitive area flights along Andersen cliffline restricted to 1000' AGL or above. 2. EMERG SAFE ALT 100 NM 2900'. 3. VGSI and descent angles not coincident (VGSI angle 3.00°/TCH 59').								



Gnd speed-Kts	70	90	100	120	140	160	<div><div>SALS</div><div>REIL</div><div>PAPI</div></div> <div><div>3000'</div><div>↑</div></div> <div><div>D→</div><div>ISLAA</div></div>
Descent Angle 3.00°	372	478	531	637	743	849	
MAP at RW06L							

Military STRAIGHT-IN LANDING RWY06L				CIRCLE-TO-LAND			
LNAV MDA(H) 1040' (501')				Not Authorized Northwest of Rwy 06L-24R Not Authorized to Rwy 06L and 24R			
ALS out				Max Kts			
				90	1060' (443') - 1		
				120	1080' (463') - 1		
				140	1240' (623') - 1 3/4		
				165	1240' (623') - 2		

CHANGES: Apt/TDZE elev, MSA, note, VDP, minimums.

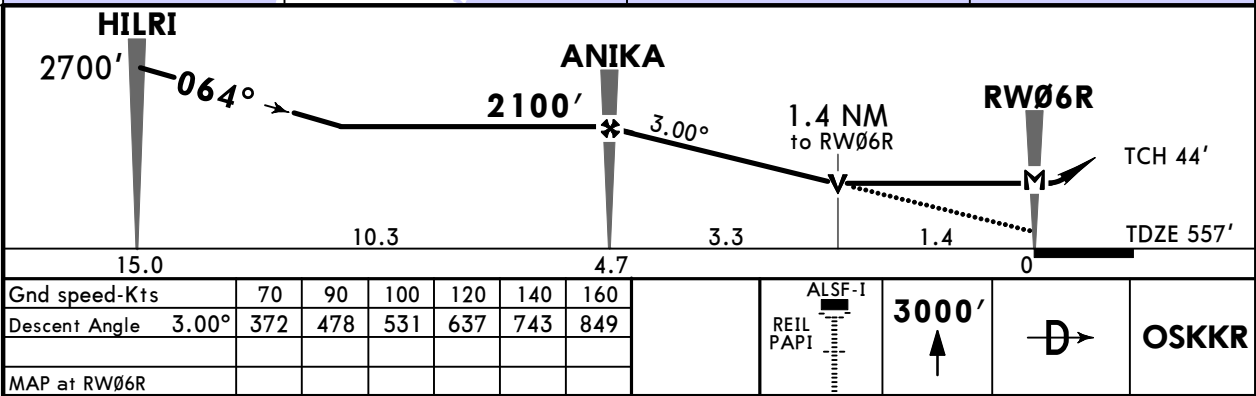
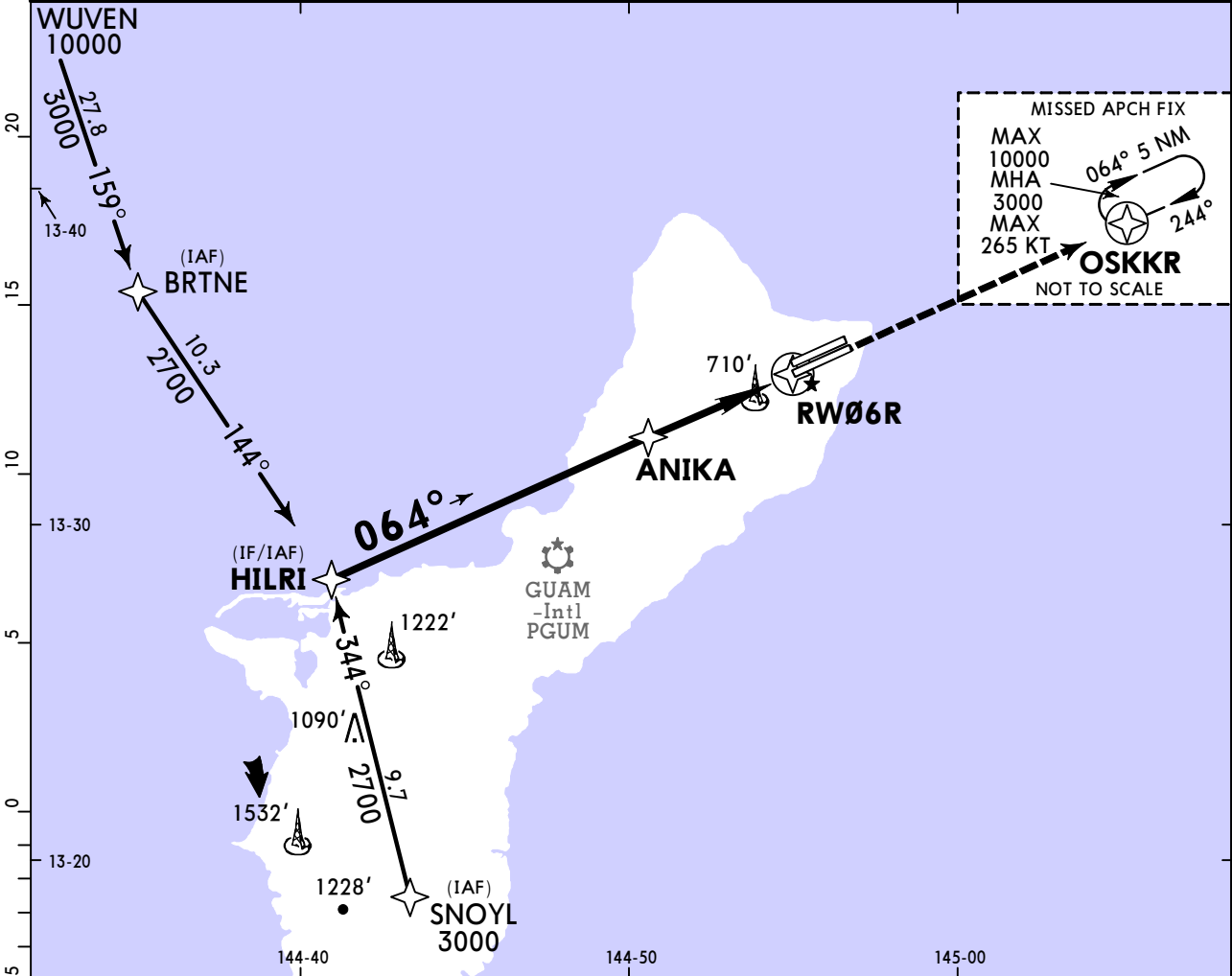
© JEPPesen, 2019, 2021. ALL RIGHTS RESERVED.

PGUA/UAM
YIGO, GUAM

JEPPESSEN
11 JUN 21
Eff 17 Jun **(32-2)**

ANDERSEN AFB
RNAV (GPS) Rwy 06R

ATIS 118.175		GUAM Approach (R) 119.8		ANDERSEN Tower 126.2		Ground 121.7		
RNAV	Final Apch Crs 064°	ANIKA 2100'(1543')	LNAV MDA(H) 1040'(483')	Apt Elev 617' TDZE 557'		<div>2600</div> <div>MSA RW06R</div>		
MISSED APCH: Climb to 3000' direct OSKKR and hold.								
RNP Apch	Alt Set: INCHES		Trans level: FL 180		Trans alt: 18000'			
1. CAUTION: Environmentally sensitive area flights along Andersen cliffline restricted to 1000' AGL or above. 2. EMERG SAFE ALT 100 NM 2900'.								



Military		STRAIGHT-IN LANDING RWY06R		CIRCLE-TO-LAND	
LNAV		MDA(H) 1040' (483')		Not Authorized Northwest of Rwy 06L-24R	
ALS out		ALS out		Max Kts	
A	RVR 24 or 1/2	RVR 55 or 1		90	1060' (443') - 1
B				120	1080' (463') - 1
C	RVR 50 or 1	1 3/8		140	1240' (623') - 1 3/4
D				165	1240' (623') - 2

CHANGES: Apt elev, MSA, note, VDP, minimums.

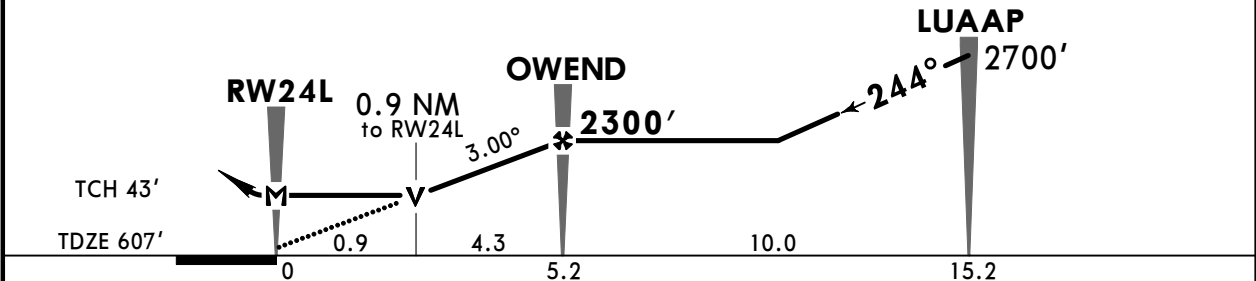
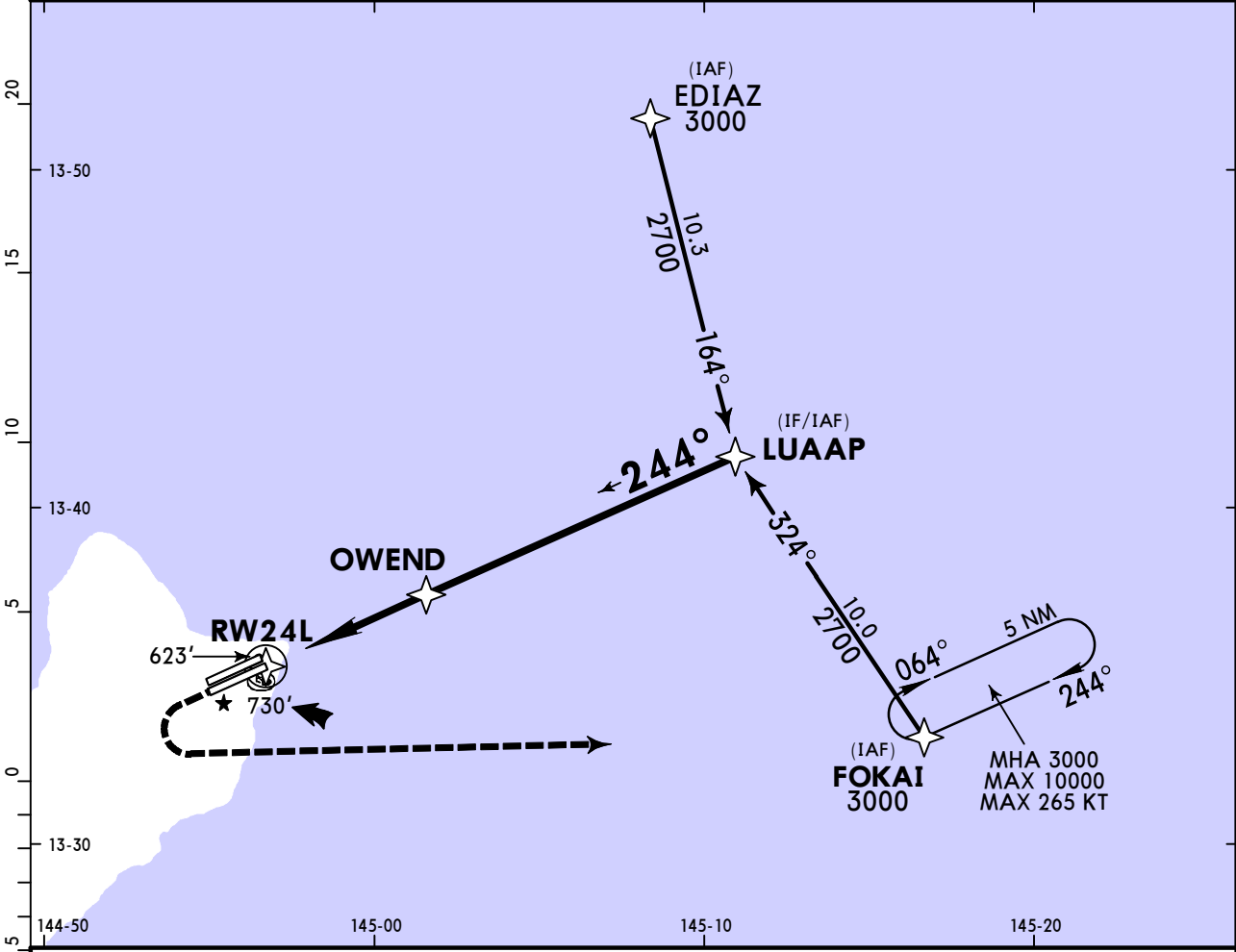
© JEPPESSEN, 2019, 2021. ALL RIGHTS RESERVED.

PGUA/UAM
YIGO, GUAM

JEPPESEN
11 JUN 21
Eff 17 Jun **(32-3)**

ANDERSEN AFB
RNAV (GPS) Rwy 24L

ATIS 118.175		GUAM Approach (R) 119.8		ANDERSEN Tower 126.2		Ground 121.7			
RNAV	Final Apch Crs 244°	OWEND 2300'(1693')	LNAV MDA(H) 940'(333')	Apt Elev 617' TDZE 607'	<div>2600</div> <div>MSA RW24L</div>				
MISSED APCH: Climb to 1200' then climbing LEFT turn to 3000' direct FOKAI and hold.									
RNP Apch	Alt Set: INCHES		Trans level: FL 180					Trans alt: 18000'	
1. CAUTION: Environmentally sensitive area flights along Andersen cliffline restricted to 1000' AGL or above. 2. EMERG SAFE ALT 100 NM 2900'.									



Gnd speed-Kts	70	90	100	120	140	160	<div>REIL PAPI</div> <div>SALS</div> <div>1200'</div> <div>3000'</div> <div>LT</div>	<div>→</div>	FOKAI
Descent Angle 3.00°	372	478	531	637	743	849			
MAP at RW24L									

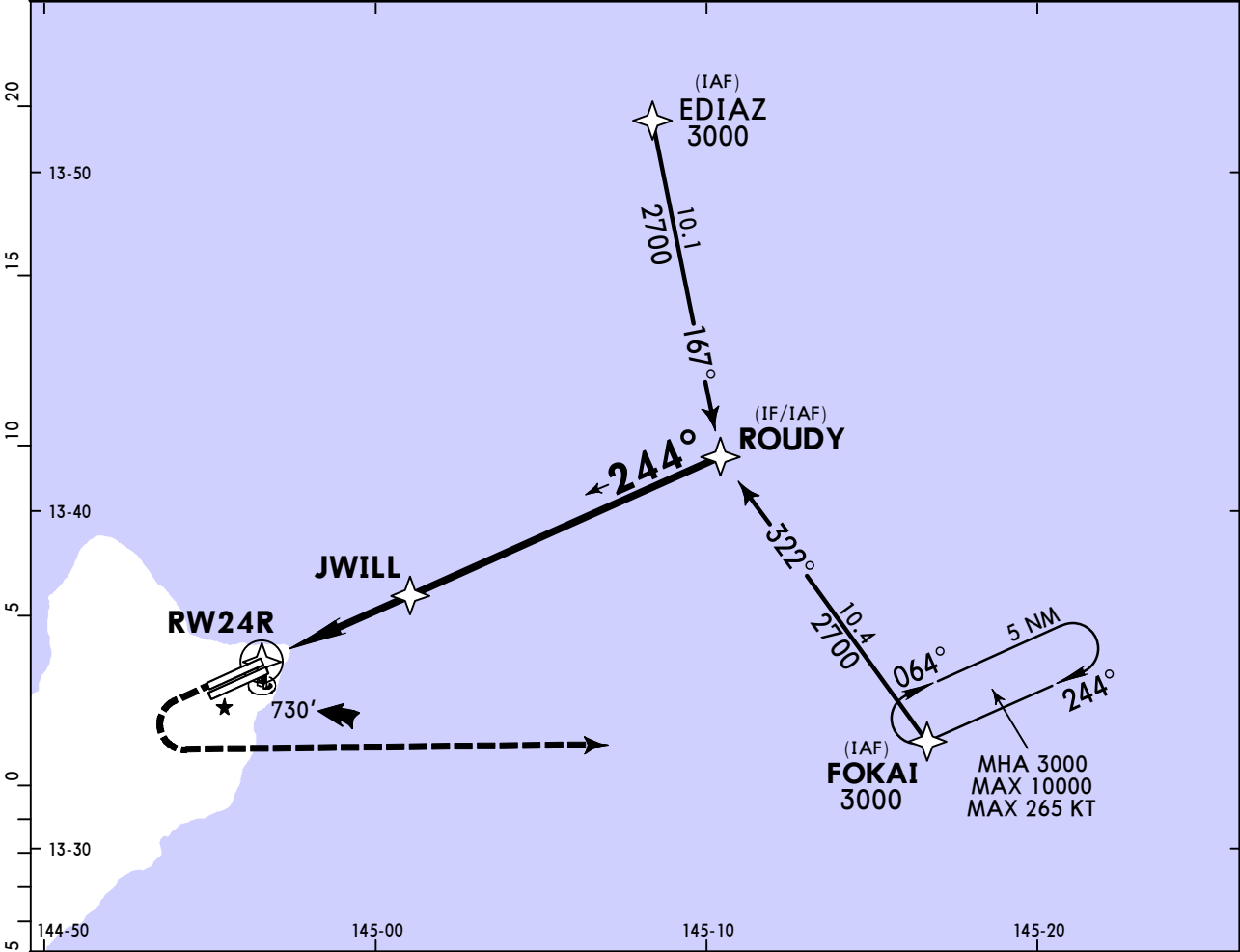
Military STRAIGHT-IN LANDING RWY24L						CIRCLE-TO-LAND					
LNAV MDA(H) 940' (333')						Not Authorized Northwest of Rwy 06L-24R					
ALS out						Max Kts					
						90	1060' (443') - 1				
						120	1080' (463') - 1				
						140	1240' (623') - 1 3/4				
						165	1240' (623') - 2				

PGUA/UAM
YIGO, GUAM

JEPPESEN
11 JUN 21
Eff 17 Jun **(32-4)**

ANDERSEN AFB
RNAV (GPS) Rwy 24R

ATIS 118.175		GUAM Approach (R) 119.8		ANDERSEN Tower 126.2		Ground 121.7		
RNAV	Final Apch Crs 244°	JWILL 2200'(1583')	LNAV MDA(H) 960'(343')	Apt Elev 617' TDZE 617'		<div>2600</div> <div>MSA RW24R</div>		
MISSED APCH: Climb to 1200' then climbing LEFT turn to 3000' direct FOKAI and hold.								
RNP Apch	Alt Set: INCHES		Trans level: FL 180		Trans alt: 18000'			
1. CAUTION: Environmentally sensitive area flights along Andersen cliffline restricted to 1000' AGL or above. 2. EMERG SAFE ALT 100 NM 2900'.								



Gnd speed-Kts	70	90	100	120	140	160		1200'	3000'	
Descent Angle	3.00°	372	478	531	637	743		849	LT	
MAP at RW24R										
Military STRAIGHT-IN LANDING RWY24R										
LNAV										
MDA(H) 960' (343')										
ALS out								CIRCLE-TO-LAND		
								Not Authorized Northwest of Rwy 06L-24R		
								Max Kts		
								90	MDA(H) 1060' (443') - 1	
								120	1080' (463') - 1	
A	RVR 24 or 1/2						RVR 55 or 1	140	1240' (623') - 1 3/4	
B										
C								1240' (623') - 2		
D										

CHANGES: Apt/TDZE elev, MSA, note, VDP, minimums.

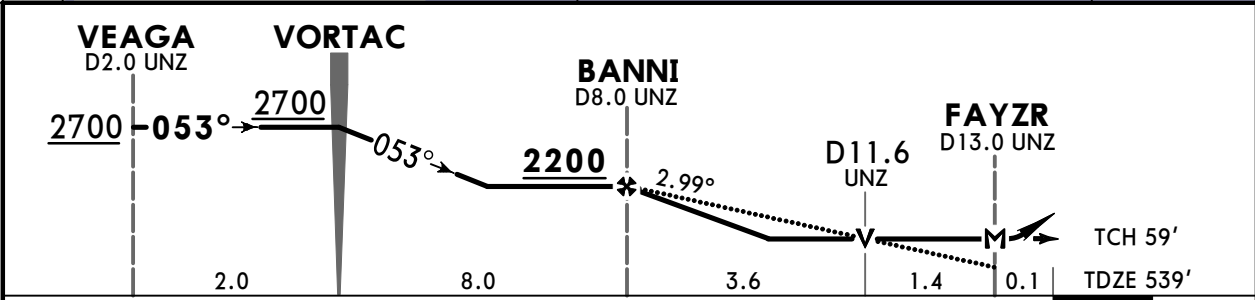
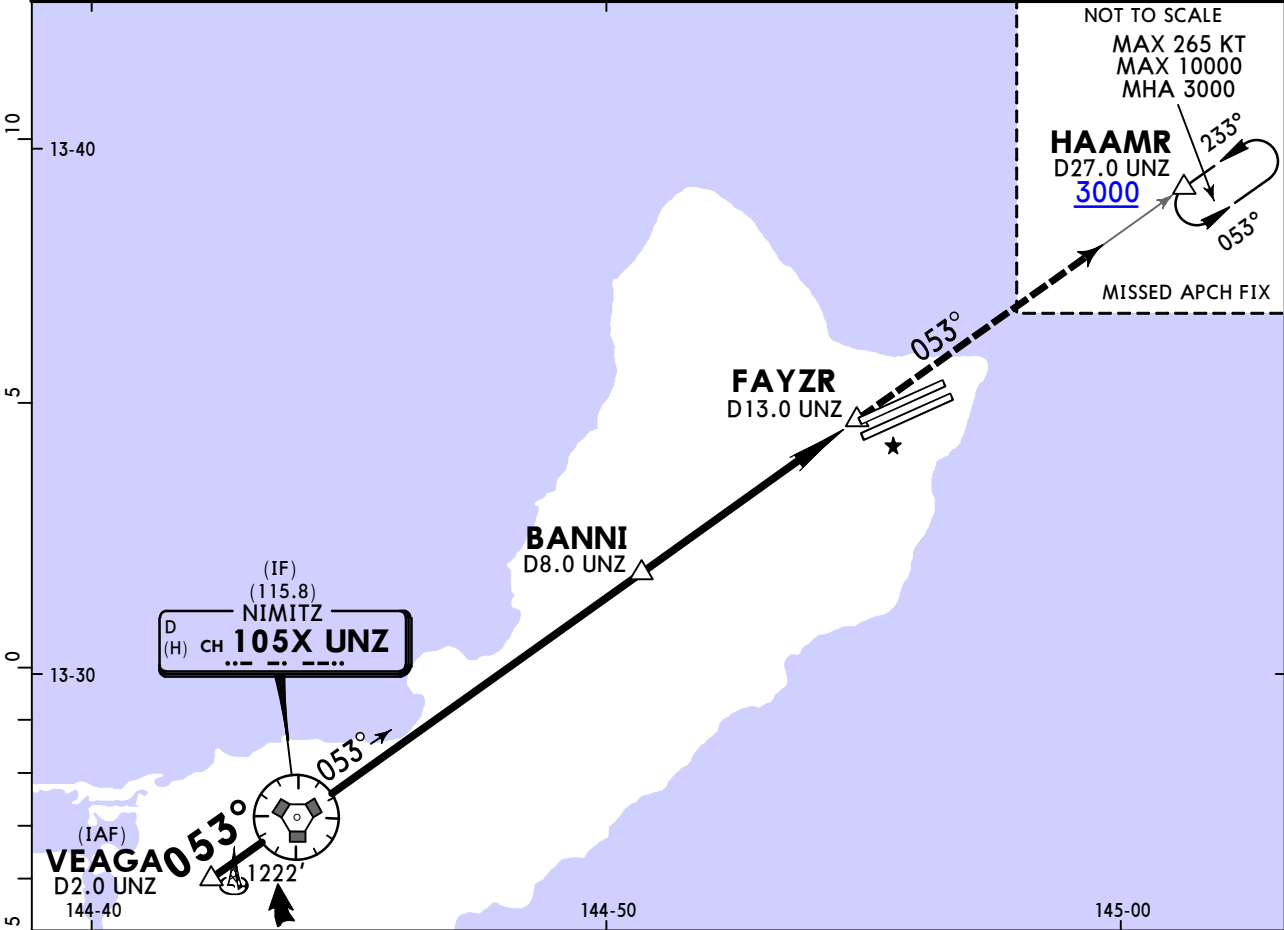
© JEPPESEN, 2019, 2021. ALL RIGHTS RESERVED.

PGUA/UAM
YIGO, GUAM

JEPPESSEN
3 SEP 21 (34-1)

ANDERSEN AFB
TACAN Y Rwy 06L

ATIS		GUAM Approach (R)		ANDERSEN Tower		Ground	
118.175 254.325		119.8 269.0		126.2 233.7		121.7 275.8	
TACAN UNZ CH 105X (115.8)	Final Apch Crs 053°	BANNI 2200 (1661')		MDA(H) 1060' (521')	Apt Elev 617' TDZE 539'	<div><div></div><div>2600</div></div> <div>MSA UNZ VORTAC</div>	
MISSED APCH: Climb to 3000', intercept UNZ VORTAC R-053 to HAAMR/D27.0 UNZ and hold.							
Alt Set: INCHES		Trans level: FL 180		Trans alt: 18000'			
1. CAUTION: Environmentally sensitive area, flights along Andersen cliffline restricted to 1000' AGL or above. 2. EMERG SAFE ALT 100 NM 2900'. 3. Missed approach requires use of RNAV or ATC RADAR monitoring.							



Gnd speed-Kts	70	90	100	120	140	160	SALS REIL PAPI	3000' ↑	UNZ 115.8 CH 105X R-053	HAAMR
Descent Angle	2.99°	370	476	529	635	741				
MAP at FAYZR										

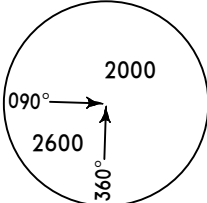
Military		STRAIGHT-IN LANDING		CIRCLE-TO-LAND	
		MDA(H) 1060' (521')		Not Authorized Northwest of Rwy 06L-24R	
		ALS out		Max Kts	
A	500'- R40 or V3/4	500'- R55 or V1		90	1060' (443') 500'-V1
B				120	1080' (463') 500'-V1
C				140	1240' (623') 700'-V1 3/4
D	500'- V1 1/4	500'- V1 1/2		165	1240' (623') 700'-V2
E				200	1240' (623') 700'-V2 1/4

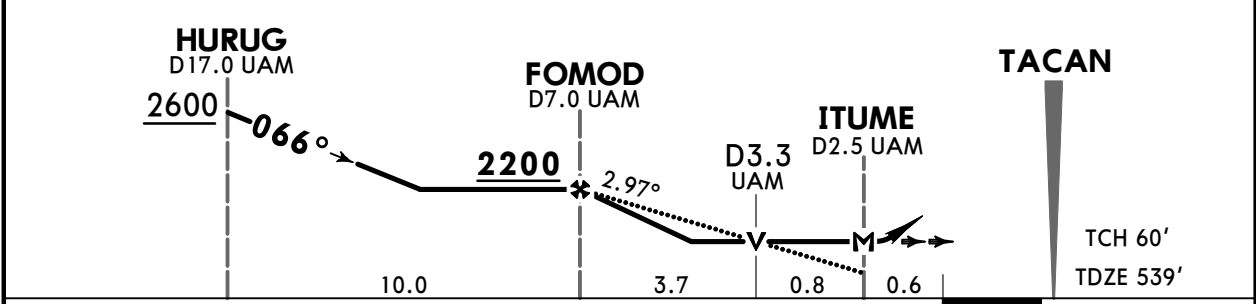
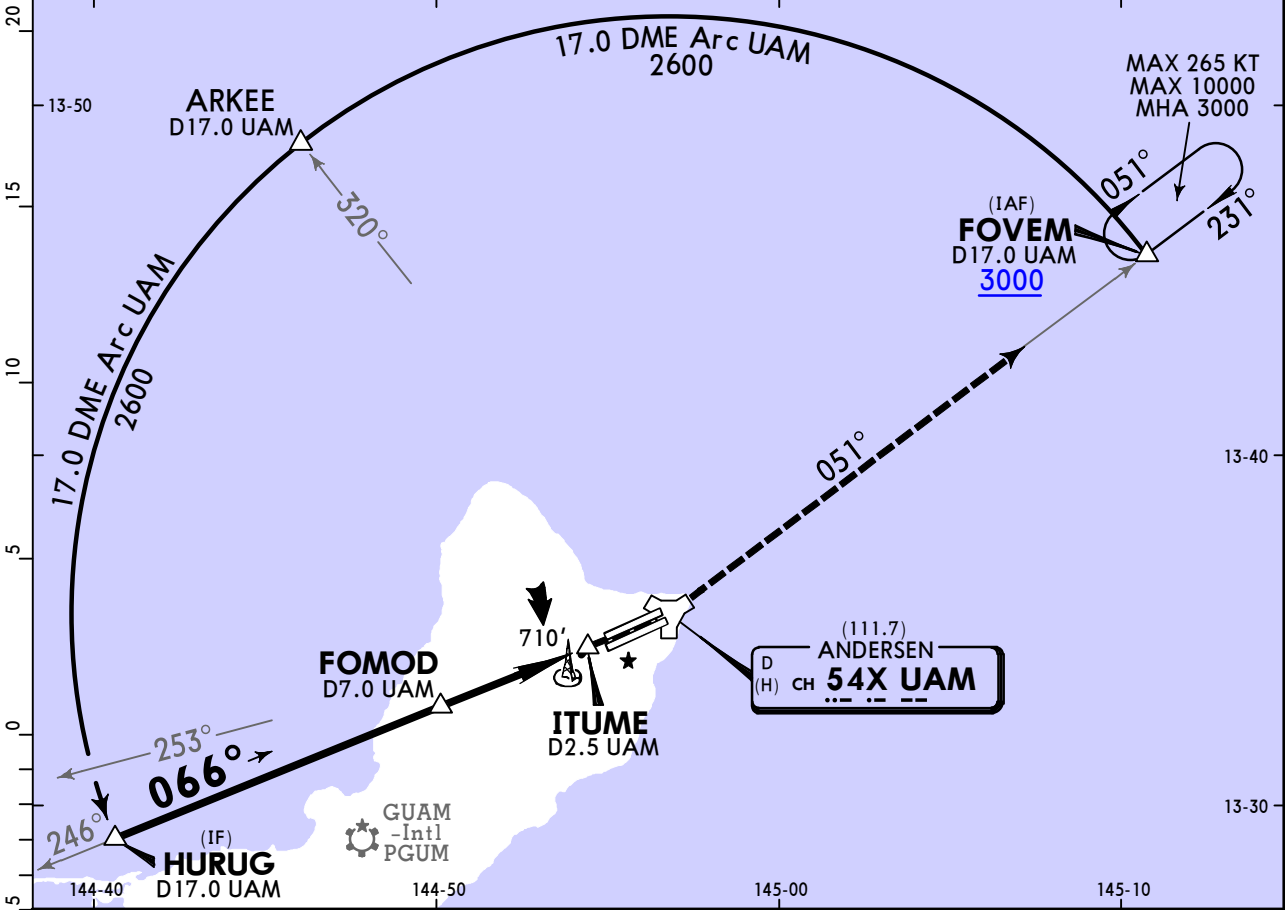
CHANGES: None.

PGUA/UAM
YIGO, GUAM

JEPPESSEN
3 SEP 21 (34-2)

ANDERSEN AFB
TACAN Z Rwy 06L

ATIS		GUAM Approach (R)		ANDERSEN Tower		Ground	
118.175	254.325	119.8	269.0	126.2	233.7	121.7	275.8
TACAN UAM CH 54X (111.7)	Final Apch Crs 066°	FOMOD 2200 (1661')		MDA(H) 1040' (501')	Apt Elev 617' TDZE 539'	<div></div>	
MISSED APCH: Climb to 3000', intercept UAM TACAN R-051 to FOVEM/D17.0 UAM and hold.							
Alt Set: INCHES							



Gnd speed-Kts	70	90	100	120	140	160	<div><div>SALS</div><div>REIL</div><div>PAPI</div></div>	3000' <div>↑</div>	UAM CH 54X (111.7) R-051	FOVEM
Descent Angle 2.97°	368	473	525	630	736	841				
MAP at ITUME										

Military		STRAIGHT-IN LANDING		CIRCLE-TO-LAND	
		MDA(H) 1040' (501')		Not Authorized Northwest of Rwy 06L-24R	
		ALS out		Max Kts	
A	500'- R40 or V3/4	500'- R55 or V1		90	1060' (443') 500'-V1
B				120	1080' (463') 500'-V1
C				140	1240' (623') 700'-V1 3/4
D	500'- V1 1/4	500'- V1 3/8		165	1240' (623') 700'-V2
E				200	1240' (623') 700'-V2 1/4

CHANGES: Transition altitudes.

© JEPPESSEN, 2020, 2021. ALL RIGHTS RESERVED.

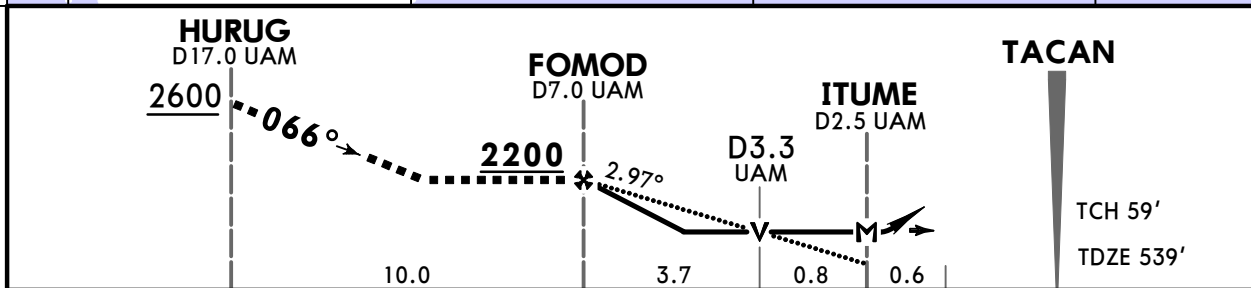
PGUA/UAM
YIGO, GUAM

JEPPESSEN
3 SEP 21 (34-3)

ANDERSEN AFB
HI-TACAN X Rwy 06L

BRIEFING STRIP™

ATIS		GUAM Approach (R)		ANDERSEN Tower		Ground		
118.175 254.325		119.8 269.0		126.2 233.7		121.7 275.8		
TACAN UAM CH 54X (111.7)	Final Apch Crs 066°	FOMOD <u>2200</u> (1661')	MDA(H) 1040' (501')	Apt Elev 617' TDZE 539'	<div><div>2000</div><div>090°→</div><div>2600↑</div><div>360°</div></div> <div>MSA UAM TACAN</div>			
MISSED APCH: Climb to 3000', intercept UAM TACAN R-051 to FOVEM and hold.								
Alt Set: INCHES		Trans level: FL 180		Trans alt: 18000'				
1. Radar or DME required. 2. CAUTION: Environmentally sensitive area, flights along Andersen cliffline restricted to 1000' AGL or above. 3. EMERG SAFE ALT 100 NM 2900'. 4. All touchdown zones have a 1.0% down slope.								



Gnd speed-Kts	70	90	100	120	140	160	<div>SALS</div> <div>REIL</div> <div>PAPI</div>	3000' <div>↑</div>	UAM CH 54X (111.7) R-051	FOVEM
Descent Angle 2.97°	368	473	525	630	736	841				
MAP at ITUME										

TERPS MIL (USAF) ORIG	Military		STRAIGHT-IN LANDING		CIRCLE-TO-LAND	
			MDA(H) 1040' (501')		Not Authorized Northwest of Rwy 06L-24R	
			ALS out		Max Kts	
					MDA(H)	
	A	500'- R40 or V3/4	500'- R55 or V1		90	1060' (443') 500'-V1
	B				120	1080' (463') 500'-V1
C					140	1240' (623') 700'-V1 3/4
D		500'- V1 1/4	500'- V1 3/8		165	1240' (623') 700'-V2
E					200	1240' (623') 700'-V2 1/4

CHANGES: Transition altitudes.

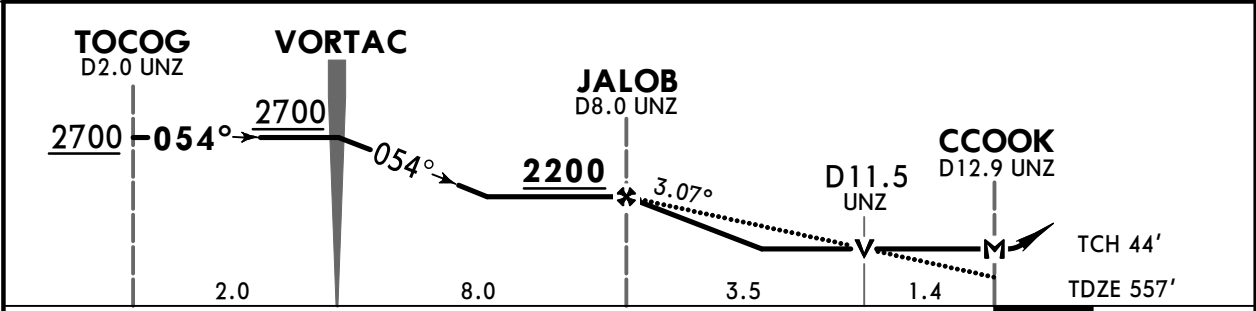
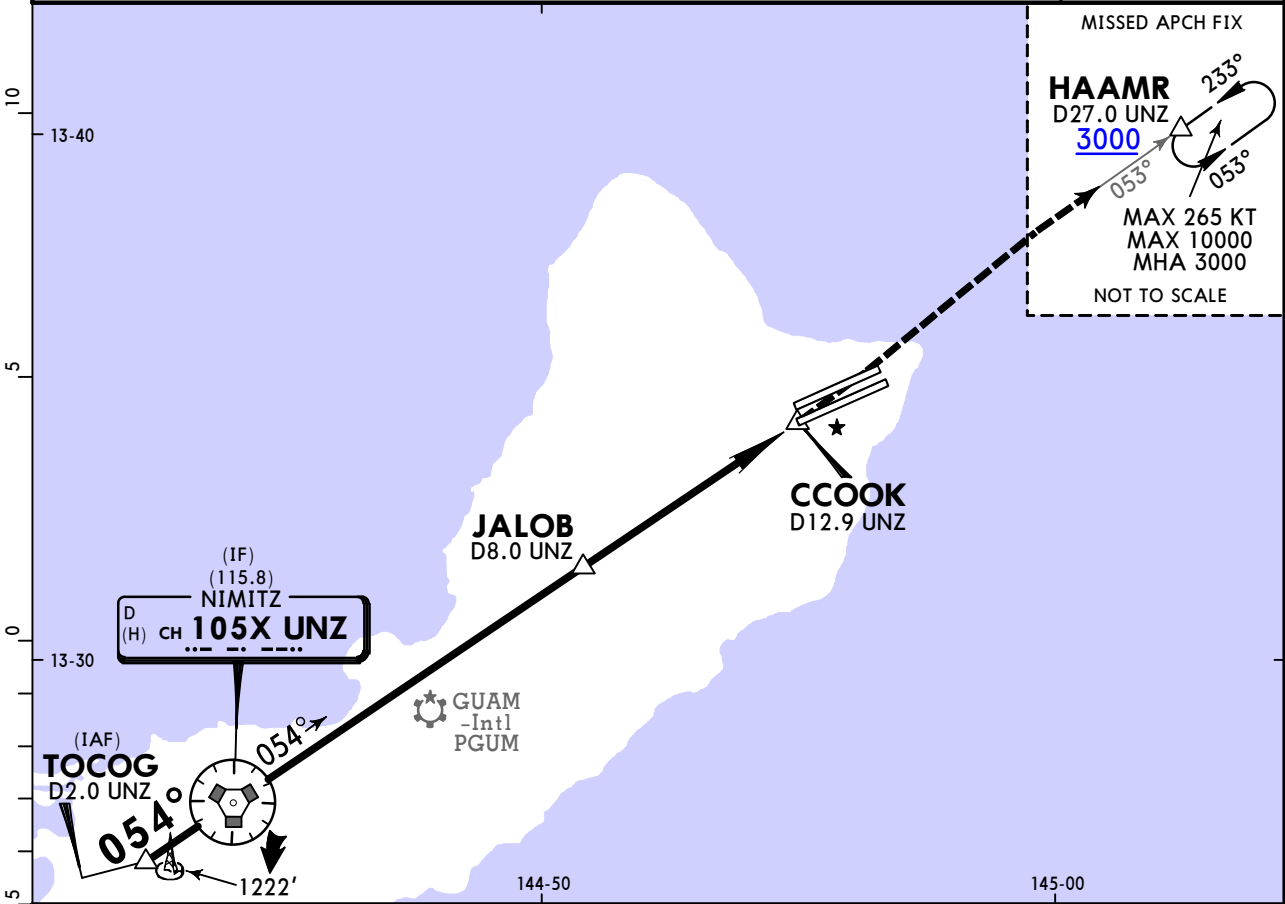
© JEPPESSEN, 2020, 2021. ALL RIGHTS RESERVED.

PGUA/UAM
YIGO, GUAM

JEPPESSEN
3 SEP 21 (34-4)

ANDERSEN AFB
TACAN Y Rwy 06R

ATIS		GUAM Approach (R)		ANDERSEN Tower		Ground	
118.175 254.325		119.8 269.0		126.2 233.7		121.7 275.8	
TACAN UNZ CH 105X (115.8)	Final Apch Crs 054°	JALOB 2200 (1643')	MDA(H) 1060' (503')	Apt Elev 617' TDZE 557'		<div>2600</div> <div>MSA UNZ VORTAC</div>	
MISSED APCH: Climb to 3000', intercept UNZ VORTAC R-053 to HAAMR and hold.							
Alt Set: INCHES Trans level: FL 180 Trans alt: 18000'							
1. CAUTION: Environmentally sensitive area, flights along Andersen cliffline restricted to 1000' AGL or above. 2. EMERG SAFE ALT 100 NM 2900'. 3. Missed approach requires use of RNAV or ATC RADAR monitoring.							



Gnd speed-Kts	70	90	100	120	140	160	<div><div>ALSFI</div><div>REIL</div><div>PAPI</div></div>	3000'	UNZ CH 105X R-053	HAAMR
Descent Angle 3.07°	380	489	543	652	760	869				
MAP at CCOOK										

Military		STRAIGHT-IN LANDING		CIRCLE-TO-LAND	
		MDA(H) 1060' (503')		Not Authorized Northwest of Rwy 06L-24R	
		ALS out		Max Kts	
A	500'- R24 or V1/2	500'- R55 or V1		90	1160' (443') 500'-V1
B				120	1180' (463') 500'-V1
C				140	1240' (623') 700'-V1 3/4
D	500'- R55 or V1	500'- V1 3/8		165	1240' (623') 700'-V2
E				200	1240' (623') 700'-V2 1/4

CHANGES: None.

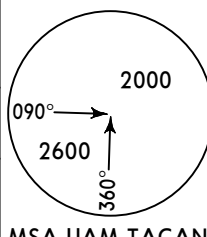
© JEPPESSEN, 2020, 2021. ALL RIGHTS RESERVED.

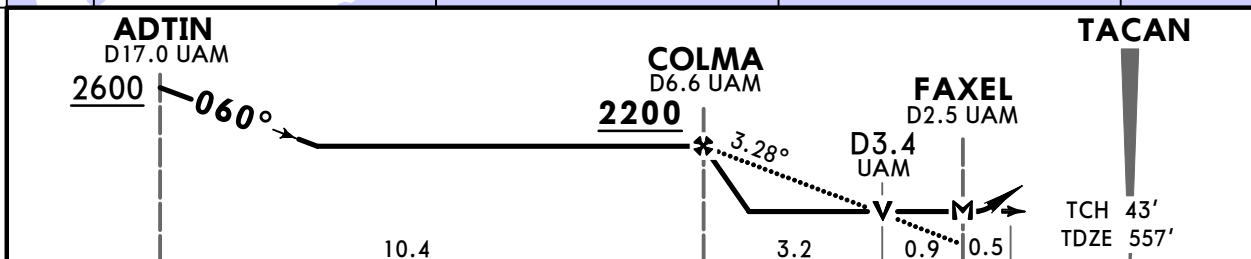
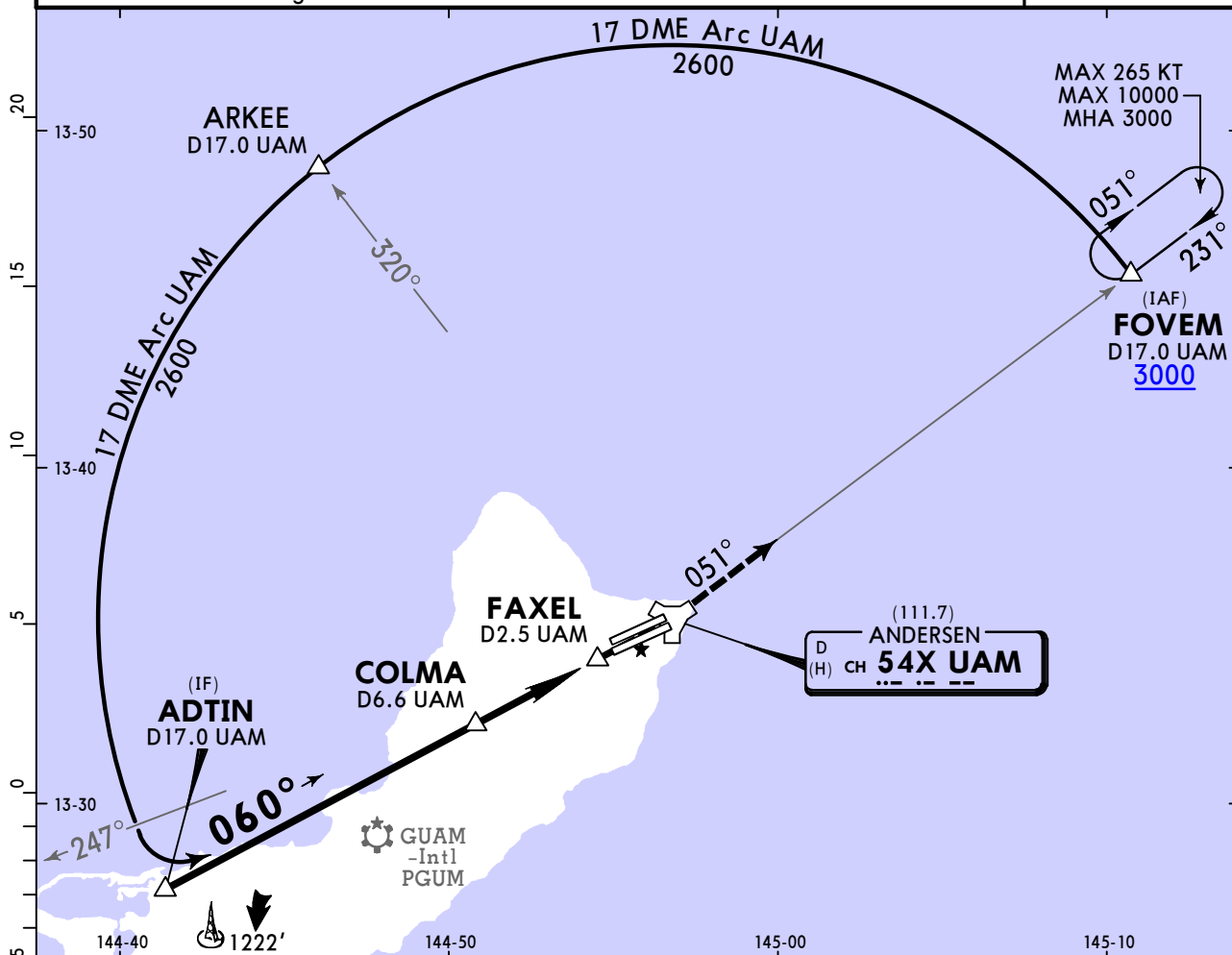
PGUA/UAM
YIGO, GUAM

JEPPESSEN
3 SEP 21 (34-5)

ANDERSEN AFB
TACAN Z Rwy 6R

BRIEFING STRIP™

ATIS		GUAM Approach (R)		ANDERSEN Tower		Ground	
118.175	254.325	119.8	269.0	126.2	233.7	121.7	275.8
TACAN UAM CH 54X (111.7)	Final Apch Crs 060°	COLMA 2200 (1643')		MDA(H) 1040' (483')		Apt Elev 617' TDZE 557'	
MISSED APCH: Climb to 3000', intercept UAM TACAN R-051 to FOVEM/D17.0 UAM and hold.							
Alt Set: INCHES		Trans level: FL 180			Trans alt: 18000'		
1. CAUTION: Environmentally sensitive area, flights along Andersen cliffline restricted to 1000' AGL or above. 2. EMERGENCY SAFE ALTITUDE 100 NM 2900'. 3. VGSI and descent angles not coincident.							



Gnd speed-Kts	70	90	100	120	140	160	<div>ALS F-I</div> <div>REIL</div> <div>PAPI</div> <div></div>	3000'	UAM	FOVEM
Descent Angle 3.28°	406	522	580	696	813	929		CH 54X		
MAP at FAXEL								(111.7) R-051		

Military			STRAIGHT-IN LANDING		<div>C</div> <div>Max Kts</div>	CIRCLE-TO-LAND	
			MDA(H) 1040' (483')			Not Authorized Northwest of Rwy 6L-24R.	
			ALS out			MDA(H)	
A	500'- R24 or V1/2		500'- R55 or V1		90	1060' (443') 500'- V1	
B					120	1080' (463') 500'- V1	
C	500'- R50 or V1		500'- V1 3/8		140	1240' (623') 700'- V1 3/4	
165					1240' (623') 700'- V2		
200					1240' (623') 700'- V2 1/4		
D							
E							

CHANGES: Transition altitudes.

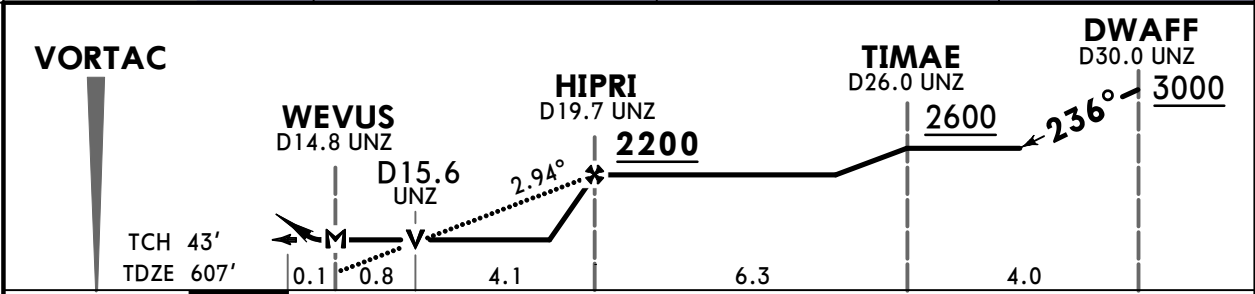
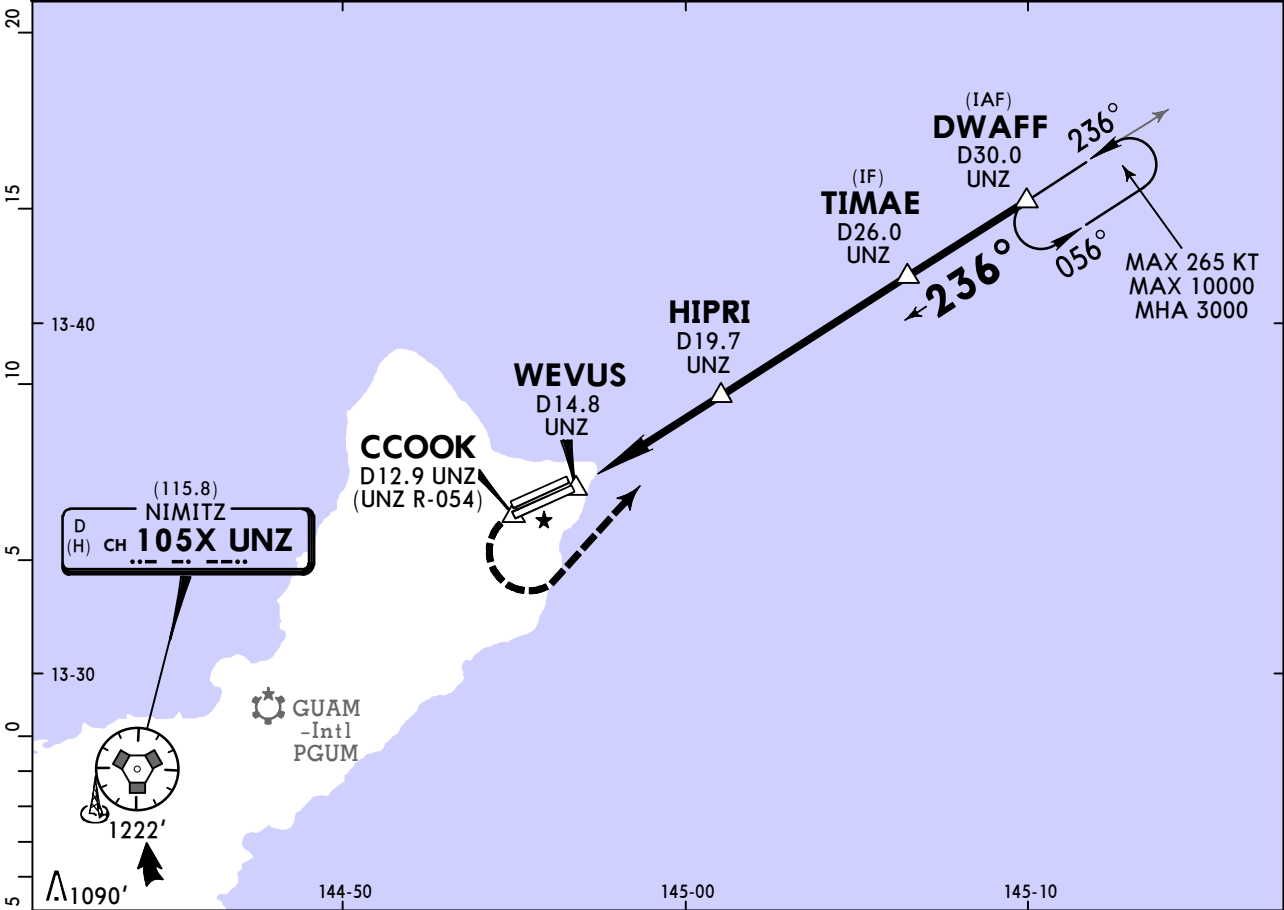
© JEPPESSEN, 2020, 2021. ALL RIGHTS RESERVED.


PGUA/UAM
YIGO, GUAM

JEPPESSEN
3 SEP 21 (34-6)

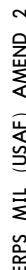
ANDERSEN AFB
TACAN Y Rwy 24L

ATIS		GUAM Approach (R)		ANDERSEN Tower		Ground	
118.175	254.325	119.8	269.0	126.2	233.7	121.7	275.8
TACAN UNZ CH 105X (115.8)	Final Apch Crs 236°	HIPRI 2200 (1593')		MDA(H) 940' (333')	Apt Elev 617' TDZE 607'	<div>2600</div> <div>MSA UNZ VORTAC</div>	
MISSED APCH: Climb to 3000' direct CCOOK, then climbing LEFT turn to intercept UNZ VORTAC R-056 to DWAFF/D30.0 UNZ and hold.							
Missed approach requires use of RNAV or ATC radar monitoring.							
Alt Set: INCHES		Trans level: FL 180		Trans alt: 18000'			
1. CAUTION: Environmentally sensitive area, flights along Andersen cliffline restricted to 1000' AGL or above. 2. EMERGENCY SAFE ALTITUDE 100 NM 2900'.							



Gnd speed-Kts	70	90	100	120	140	160		3000' ↑	→ CCOOK
Descent Angle	2.94°	364	468	520	624	728			
MAP at WEVUS									

Military		STRAIGHT-IN LANDING		CIRCLE-TO-LAND	
		MDA(H) 940' (333')		Not Authorized Northwest of Rwy 6L-24R.	
		ALS out		Max Kts	
A	400'- R40 or V3/4	400'- R55 or V1	90	1060' (443')	500'- V1
B			120	1080' (463')	500'- V1
C			140	1240' (623')	700'- V1 3/4
D	400'- R45 or V7/8	400'- R50 or V1	165	1240' (623')	700'- V2
E			200	1240' (623')	700'- V2 1/4

BRIEFING STRIP™

© JEPPESEN, 2020, 2021. ALL RIGHTS RESERVED.

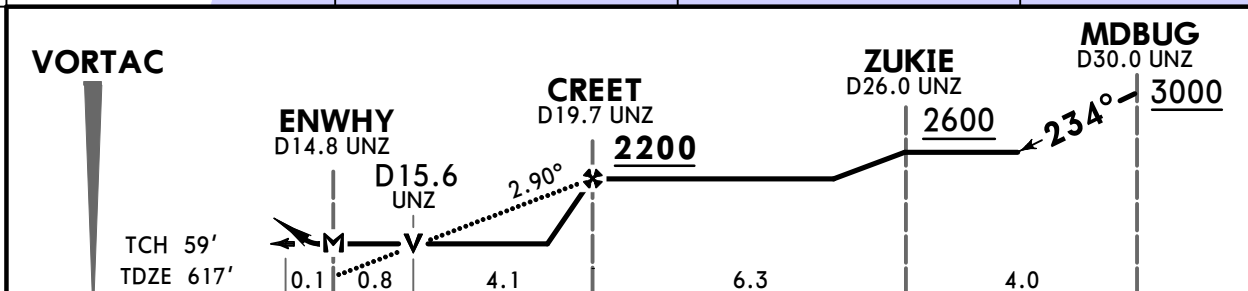
Map showing the flight path of the Nimitz-class aircraft carrier (CVN 68) during a training exercise. The path is marked with waypoints and distances:

- ENWHY** D14.8 UNZ
- CREET** D19.7 UNZ
- ZUKIE** (IF) D26.0 UNZ
- MDBG** (IAF) D30.0 UNZ

The path is defined by a solid line with arrows indicating direction. A dashed line indicates a turn at ENWHY. The map also shows the location of Guam, the Nimitz-class aircraft carrier, and the Nimitz-class aircraft carrier's flight deck. The map includes a scale bar from 0 to 20 miles and a compass rose indicating North.

Additional information on the map:

- FAYZR** D13.0 UNZ (UNZ R-053)
- GUAM** -Intl PGUM
- NIMITZ** (115.8) D (H) CH 105X UNZ
- 1222'** (distance from Nimitz to Guam)
- 1090'** (distance from Nimitz to Guam)
- MAX 265 KT**
- MAX 10000 MHA**
- 3000**



Gnd speed-Kts	70	90	100	120	140	160			
Descent Angle 2.90°	359	462	513	616	718	821			
MAP at ENWHY									

Military		STRAIGHT-IN LANDING		CIRCLE-TO-LAND	
		MDA(H) 940' (323')		Not Authorized Northwest of Rwy 6L-24R.	
		ALS out		Max Kts	MDA(H)
A	400'- R24 or V1/2	400'- R55 or V1	90	1060' (443')	500'- V1
B			120	1080' (463')	500'- V1
C	400'- R40 or V3/4	400'- R50 or V1	140	1240' (623')	700'- V1 3/4
D			165	1240' (623')	700'- V2
E			200	1240' (623')	700'- V2 1/4

